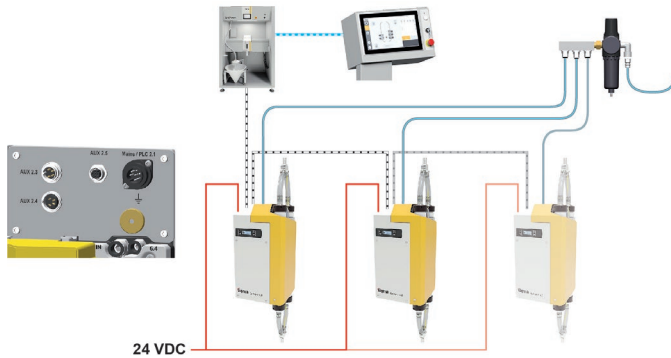
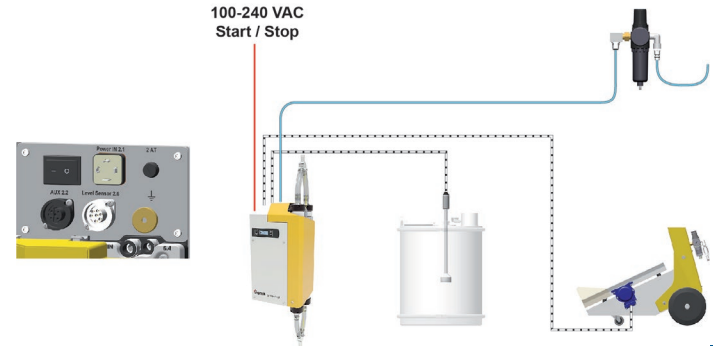


OptiFeed 4.0 Connect

New System Integration
CAN Bus communication with
MagicControl



Retrofit Installation
Communication with PLC,
MagicControl or Independent



Connect

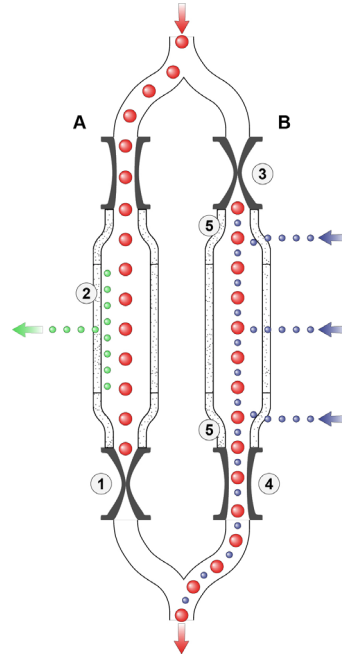
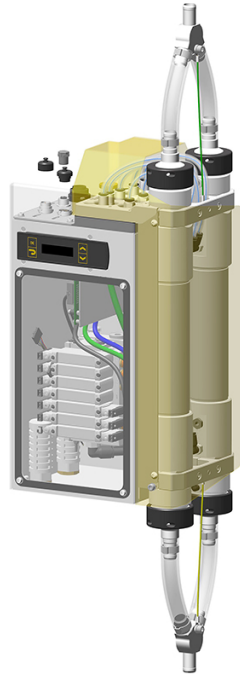
Transfer

Control



OptiFeed 4.0 Transfer

Step 1 – Suction
Vacuum draws a
high volume packet
into the chamber



Step 2 – Transfer
Transport air pushes
powder from the
alternate chamber
to feed location

Connect

Transfer

Control



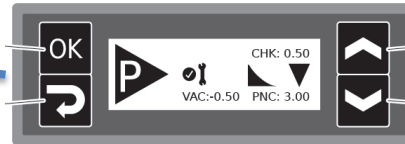
OptiFeed 4.0 Control



MagicControl

- CAN Bus connection
- Fault diagnostics
- Firmware management
- Process management

Connect



Local Management

- Mini LCD input
- Fault diagnostics
- Firmware management
- Process management

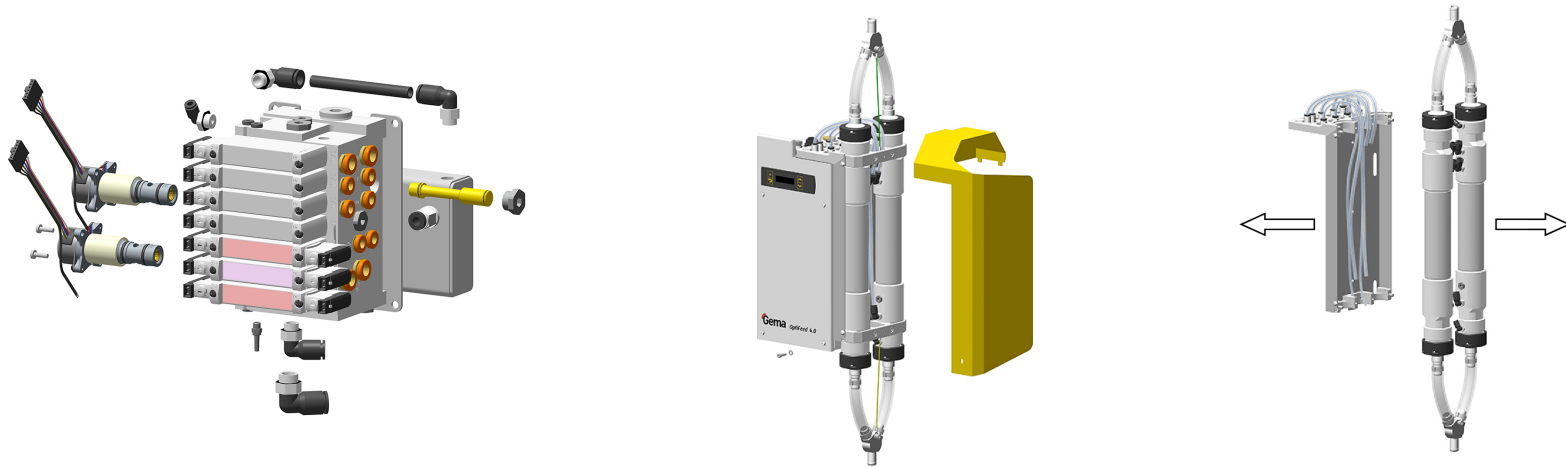
Transfer



Control



OptiFeed 4.0 Control Serviceability



Component Accessible – in place or off line

- Pneumatic and electrical connections – easily replaced
- Critical vacuum and wear monitoring
- On line servicing of key vacuum and wear parts

Connect

Transfer

Control

