

# Application Success Stories

## EAB - Built to last.®



Single – Multi Color  
System

Productivity

Powder Savings

# Application Success Stories

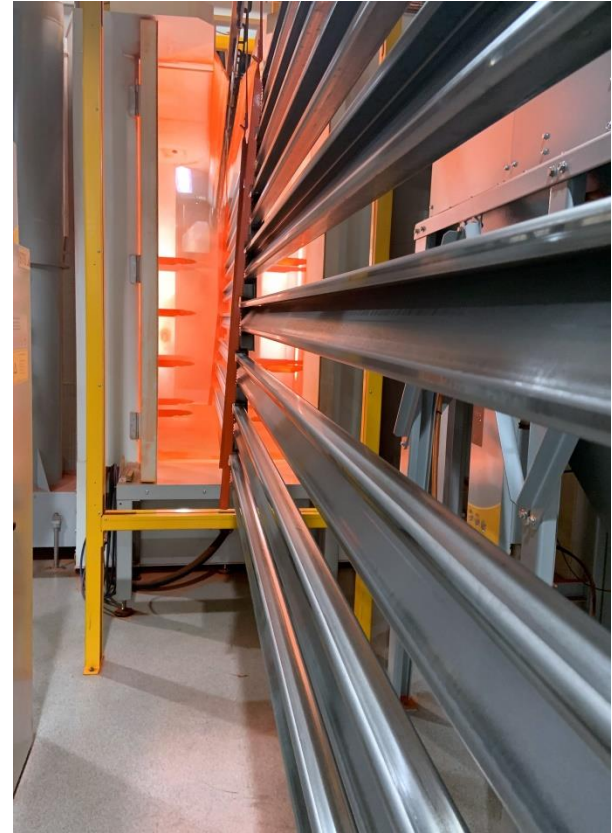
## Installation Key Data

### Technical data Powder coating plant

**Speed:** 2.2 meters per minute  
**Height:** 1'550 mm (max 2'000 mm future)  
**Width:** 500 mm  
**Length:** 8'500 mm

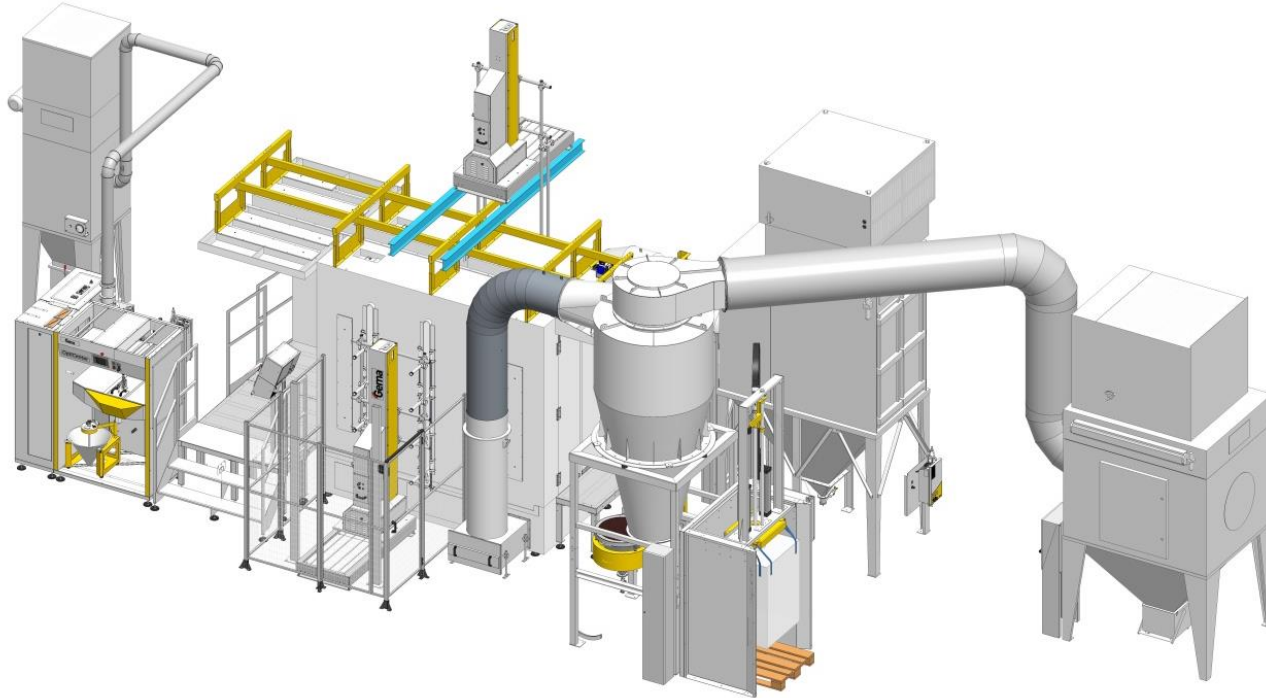
### Gema Single- / Multi Color System

16 Automatic gun OptiGun® GA03  
1 Manual gun OptiSelect® GM03  
17 Powder pump OptiSpray AP01  
2 Reciprocator ZA07-13  
1 Cyclone incl. Multi Color Filter 16'000 Nm<sup>3</sup>/h  
1 Single Color Filter 16'000 Nm<sup>3</sup>/h  
1 Powder Management Center OptiCenter® OC03  
1 OptiFeed Big Bag FPS16



# Application Success Stories

## Layout



# Application Success Stories

**EAB invested in a new powder application system in the summer of 2019. After just over a year of production, it can be stated that the investment was very successful. A high efficiency and the choice of technology adapted to EAB's production and conditions were as expected.**

## **EAB**

EAB is a family business founded in 1957 with the name Erik Andersson Byggnadsmide. EAB is located in Smålandsstenar where manufacturing and development takes place. EAB operates in three product areas: Storage equipment, Doors, Steel

buildings. Det håller.<sup>®</sup> (*Built to last*), is a registered trademark in Sweden and is owned by EAB. It permeates the entire company's organization and its suppliers, it gives EAB's customers a promise that - it is built to last.!

## **Background**

In 2018, EAB began to review its powder application. What can they do to streamline their existing system? The application system got on in years. The best way to upgrade the facility was to invest in a new complete application system. Gema was the equipment supplier that could best meet EAB's requirements and design a

proposal according to their needs. After using the new application system for over a year, you can now see how the investment turned out. Availability of the equipment, efficiency and powder consumption are measurable methods that have well met expectations.

# Application Success Stories

## **A powder booth - two types of recycling systems**

### **Single color / Multi color System**

EAB mainly uses about 90% orange "EABs orange" the other 10% is a mix of other colors. Under these conditions, EAB chose to use a traditional color change system with cyclone and final filter for the color mix. For EAB's orange, a single color system was chosen where about 99% of the powder is reused in the machine. Traditionally, a powder center for the color change system with cyclone and final filter for powder recovery and a powder containment for a single color system had been required. The unique thing about the installation at EAB is that

these systems are merged and the change between single color system and the color change system is done with a simple touch by the operator at the control unit. The system saves space because only one powder center is needed. Through a switch, the operator chooses which way the powder should go in the powder loop.

Recent years with rising raw material prices for powder paint require a high efficiency of the purchased amount of powder paint. The pay-off time on a machine investment is therefore shorter. In EAB's case, it made it possible for Gema to tailor the function and machine with their wide product range. The focus of the project was, among other

things, savings in powder consumption. This applies both financially but also from an environmental point of view. When the accounts were made the first year after installation, it was found that the efficiency of the large consumer EAB's orange has been greatly reduced, in addition, the proportion of recycling in the system has been reduced through the efficient powder pumps where the repeatability of output from the guns is optimized. The uniformity over time of the details is constant and painting programs do not need to be adjusted, they last over time.

# Application Success Stories

Here, the single color system in combination with the powder pump technology is a significant part of the calculation where the investment has a relatively short return. EAB has also increased its productivity by about 15% on the entire powder plant just by installing a new powder center. "We have now been producing for over a year. The equipment has met our expectations and requirements in a positive way. We are more than happy with the equipment. The filter solution has so far worked very well. We have been well received by Hansen-Icoma and we have developed a good understanding of the machine. We have increased productivity, reduced

powder consumption and obtained a better painting result." Says Alexander Andersson, production manager at EAB

## **EAB as a company**

EAB in Smålandsstenar develops, manufactures, sells and assembles steel buildings, warehouse fittings and gates. The company has its own companies in Norway, Finland, Denmark, Holland, the Czech Republic and Canada. Steel buildings and gates are preferably sold on the Nordic market. EAB's warehouse interior design system is sold worldwide. The company's three product

groups are the EAB Engineering Principles™, i.e. the unique way in which EAB designs and acts to meet its customer promise – it holds. EAB is a family-owned company with 270 employees with a turnover of approximately SEK 1.4 billion.