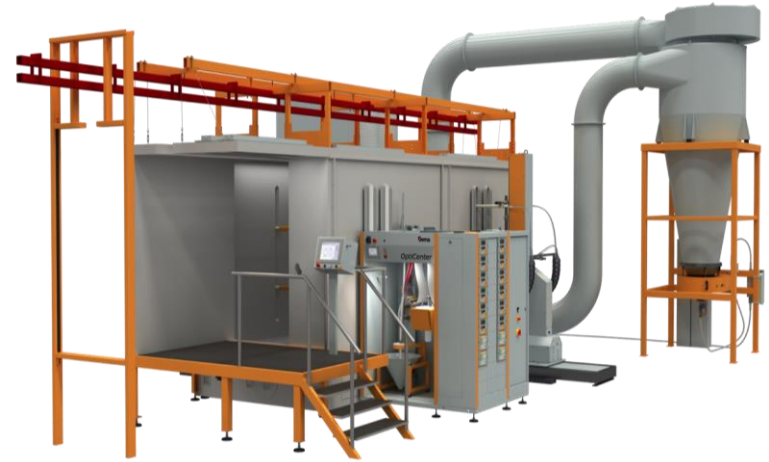


Application Success Stories



FiFab invest in a state-of-the-art powder coating system from Gema Europe at their Glenrothes manufacturing site in Scotland

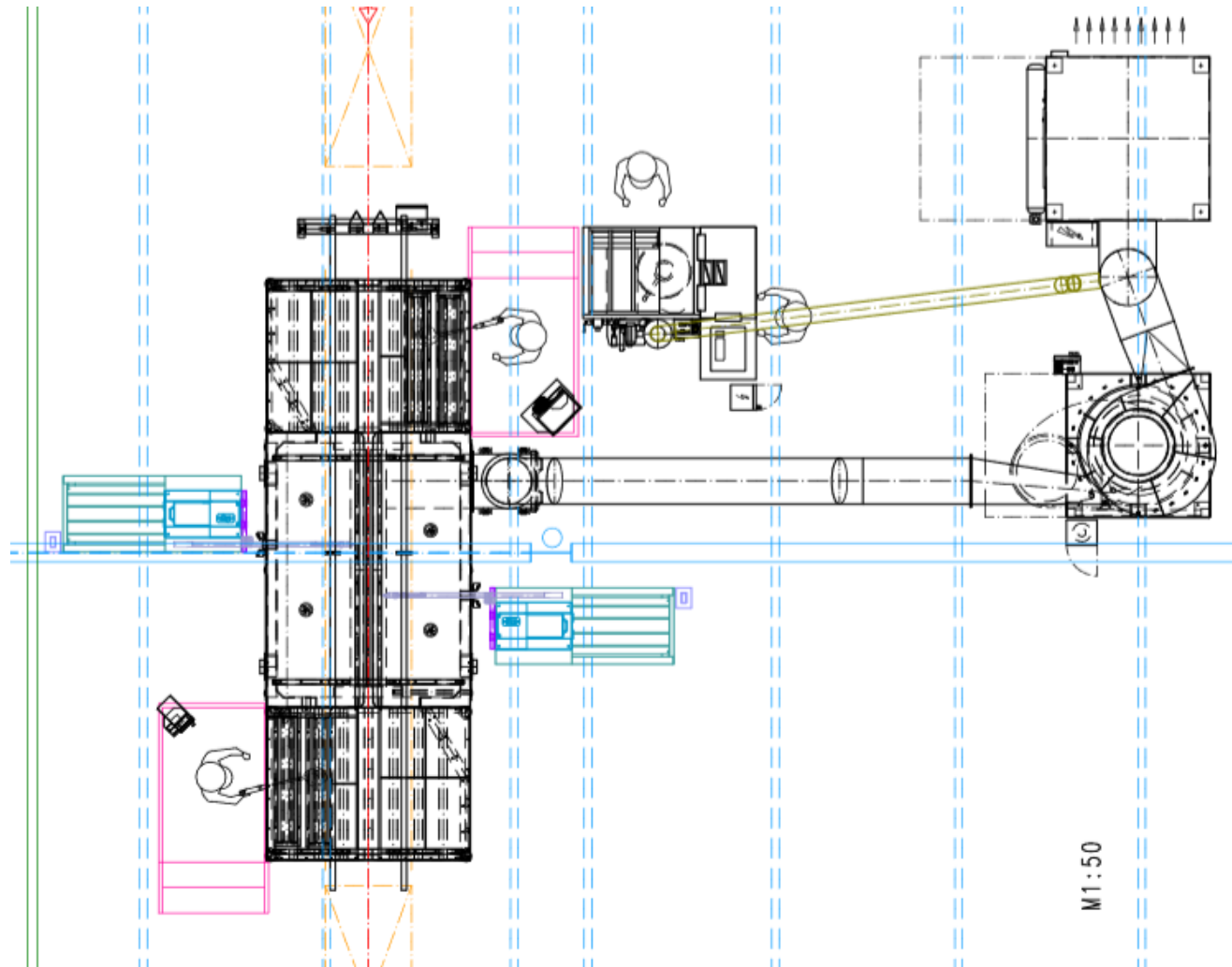
Superb coating application

Clean operating environment

Environmentally friendly

Application Success Stories

Layout



Application Success Stories

Installation Key Data

Parts:

Various precision
fabricated components

Production data:

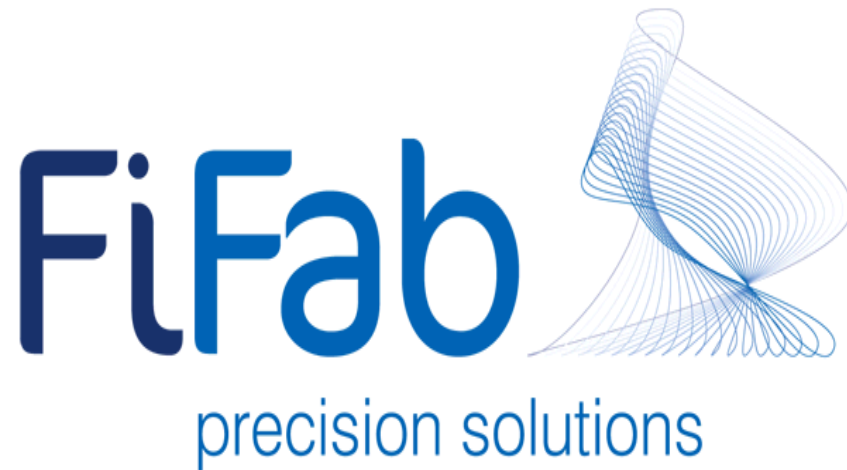
- 1800mm high
- 1000mm wide
- 2m per min

System Type:

- Magic Compact BA04
- 12,000m³/h
- 8 Automatic guns
- 2 manual stations
- OptiCenter
- CM30 control system
- Product recognition
- X & Y reciprocation



Application Success Stories



Company Profile: FiFe Fabrications Limited is one of the most advanced manufacturers of precision sheet metalwork, electro-mechanical assemblies and precision machined components in the UK. We have been in business

more than 40 years and constantly evolve to meet the needs of our customers.

The investment: Our policy is one of continuous investment in new equipment, the recent investment in a new Gema Powder Coating system has

helped us stay ahead of the curve, has significantly re-defined our powder coating operations and supports our drive to deliver best in class quality and flexibility.

Application Success Stories

Key objectives and success areas:

- ✓ Reduce applied coating costs
- ✓ Recover and re-use overspray powder
- ✓ Improve the operating environment
- ✓ Reduce waste
- ✓ Improve flexibility through fast colour change
- ✓ Reduce maintenance
- ✓ Increase line density and production output

Customer feedback:

Business Improvement Manager, Roberto Morris, explained that the new powder coating booth supplied by Swiss specialists Gema has helped them to continue to deliver best in class quality and service for their highly valued customer base:

"The headline aspects identified during the project specification phase included process automation, coating control and repeatability, flexibility in the process, delivering premium quality as well as having a focus on keeping tight cost controls. In addition there was significant weight given to the environmental



aspects of the process over the product life-cycle as we work on our long-term sustainability initiatives. With this in mind we decided to select Gema's Magic EquiFlow booth, an investment that has exceeded our expectations and has delivered on all fronts."

"FiFab works closely with all our customers to provide products, on time and on budget. Quality is integral to all we do and our Lean Systems ensure a companywide focus on reducing waste, preserving our position as one of the UK's most cost effective sheet metal suppliers."